



**GRAB-N-GO**



*Building dreams since 1980*



[quality + service + innovation]



## MISSION

**The Gallery team is an industry leader in designing products that enable our clients to deliver convenient, mobile solutions for food, beverages and merchandise.**

**Providing exceptional service, we continue to push ourselves and our industry forward with creativity, controlled processes, quality and unparalleled service.**





## OUR HISTORY

Gallery was born in a Deli. After purchasing a few mobile carts, and realizing they returned profits in just a few months, Gallery was born. Over forty years later, Gallery is a trusted partner to clients who use our carts and kiosks to deliver food, beverages and merchandise to tens of thousands of people every day.

- **Quality is non-negotiable.** Our clients expect quality, so that's what we deliver.
- **We are problem solvers.** No matter how well something is planned, change is inevitable. We stay focused on providing solutions until delivery is complete.
- **We expand your brand awareness.** Our clients' brands enhance the experience of the fan and we catalyze the brand recognition by creating memorable experiences and earning results.



[building dreams since 1980]





## OUR SOLUTIONS

Custom, off-the-shelf, elaborate, or every day.

Gallery carts, kiosks, and electric vehicles have an earned reputation for quality because we focus on it throughout our entire process.

From creative designs to bomb-proof builds, to forever-on-call service, every Gallery build follows the ABC's of a Gallery solution:

- Attractive
- Branded
- Captivating





## OUR PRODUCTS

Gallery Offers a unique and diverse line of products from mobile carts to large kiosks and everything in between. We strive to help clients find what works best for their venues, using our design team to customize projects down to the very last detail.

- **Mobile Carts – Food, Beverage, Retail**
- **Kiosks – Food, Beverage, Retail, Grab-n-Go**
- **Pop-Ups – Containers & Modular Buildings**
- **Club Level – Action stations & Dessert Carts**
- **Electric Vehicles – Mobile Food, Beverage, Retail**





## OUR PROCESS



### DESIGN

Experience, innovation and creativity before production ever begins.



### BUILD

Builds that meet the highest standards and withstand the test of time.



### INSPECT

Reliable quality assurance driven by pride in craftsmanship.



### DELIVER

Dedicated, solution-oriented teams that deliver on time.

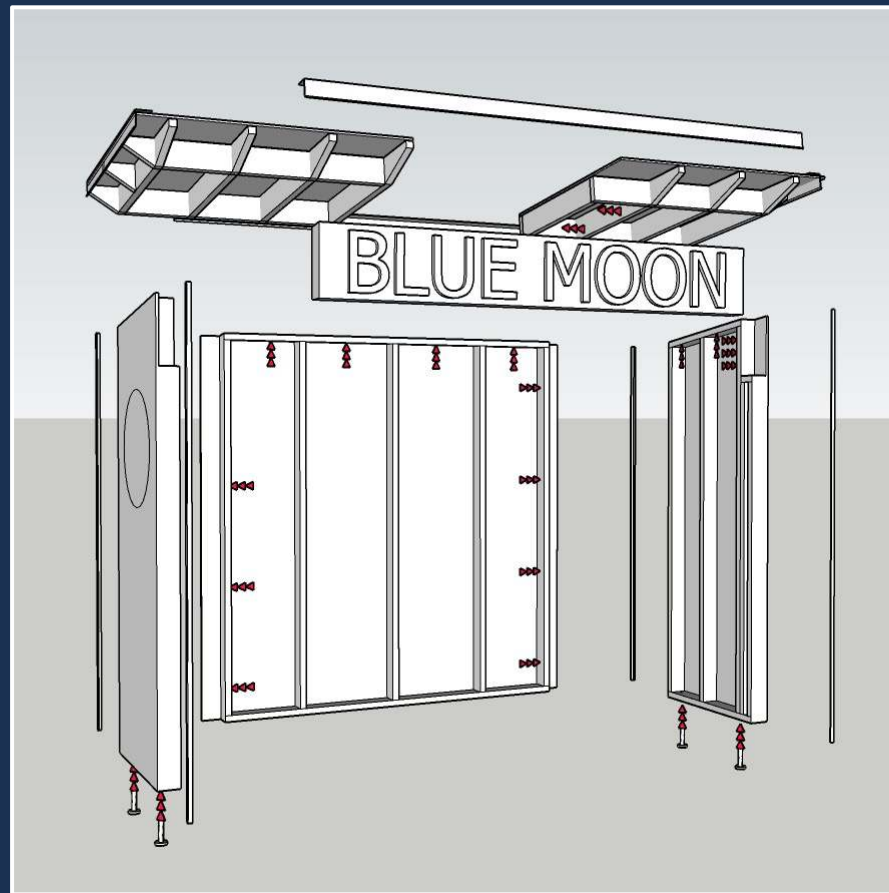


### SUPPORT

Readily available support team with a client-first mentality.



# From ideation to installation, we bring your ideas to life.



**DESIGN**



**RENDER**



**COMPLETE**

[OUR PROCESS]



[DESIGN]



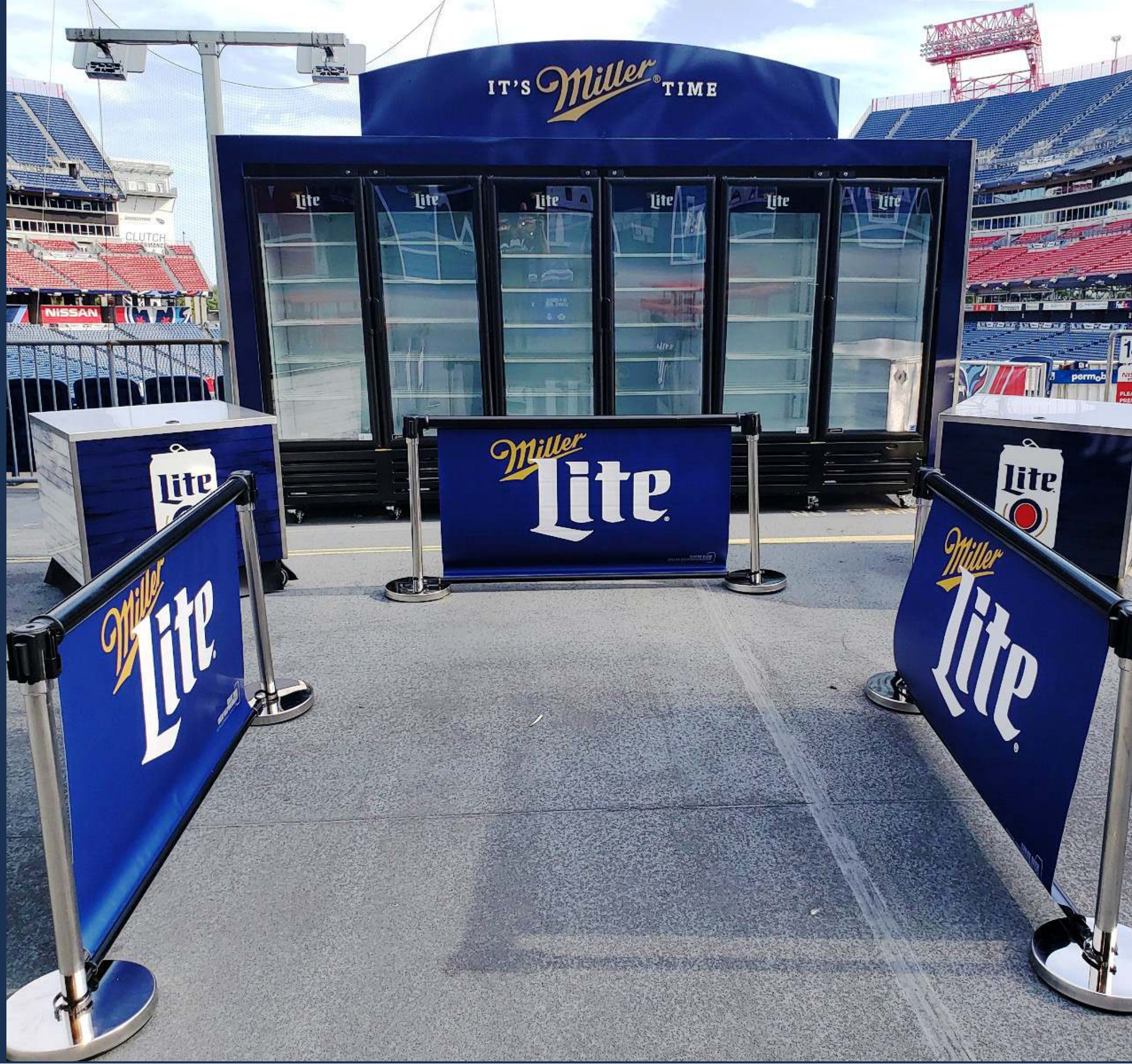
*Gallery*

## DESIGN QUALITY MATTERS

- Customized for space and venue location
- Clear distinct branding
- Customized sidewalls and headers with LED lighting
- Tight-fitting shroud
- Consistent design elements
- Customized to the brand, venue and space



[GRAB-N-GO]



*Gallery*

## THE GRAB-N-GO SOLUTION

The perfect merger of  
retail and food service.

- Take advantage of underutilized spaces
- Relieve fixed counter locations
- Expand points of sale
- Avoid additional labor cost & operational overhead





**GRAB-N-GO**

**FOOD & BEVERAGE**

**SOLUTIONS**



# CONFIGURATION 1



[GRAB-N-GO]



+



+



=



**TOTAL CAPACITY :**  
**(1,120) 20oz Bottles**

**OVERALL FOOTPRINT :**  
**150 Square Feet**  
**(10 ft x 15 ft)**



# CONFIGURATION 2



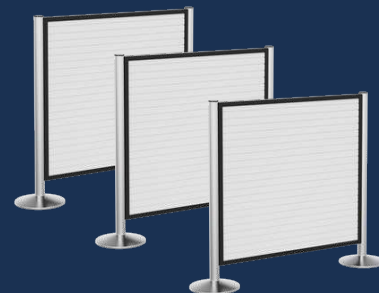
[GRAB-N-GO]



+



+



=

**TOTAL CAPACITY :**  
(1,120) 20oz Bottles

**OVERALL FOOTPRINT :**  
208 Square Feet  
(13 ft x 16 ft)



# CONFIGURATION 3



[GRAB-N-GO]



+



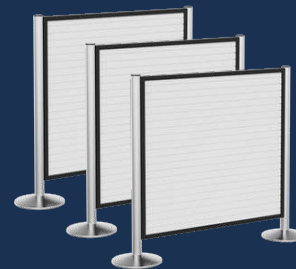
+



+



+



=

**TOTAL CAPACITY :**

- (560) - 20oz Bottles
- (24) - 8" Pre-Made Salads
- (44) - 8" Cold Sub Sandwiches
- (75) - Hot sandwiches

**OVERALL FOOTPRINT :**

208 Square Feet  
(13 ft x 16 ft)



# CONFIGURATION 4



[GRAB-N-GO]



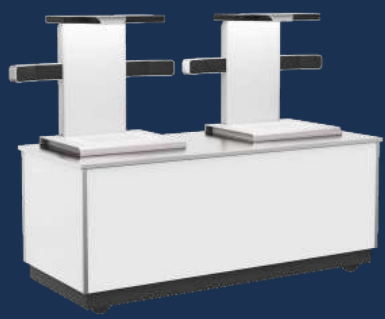
+



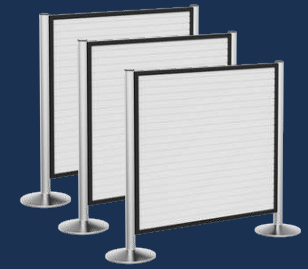
+



+



+



=

**TOTAL CAPACITY :**  
 (560) - 20oz Bottles  
 (24) - 8" Pre-Made Salads  
 (44) - 8" Cold Sub Sandwiches  
 (75) - Hot sandwiches

**OVERALL FOOTPRINT :**  
 180 Square Feet  
 (15 ft x 12 ft)



# CONFIGURATION 5



[GRAB-N-GO]



**TOTAL CAPACITY :**  
 (1120) - 20oz Bottles  
 (24) - 8" Pre-Made Salads  
 (44) - 8" Cold Sub Sandwiches  
 (75) - Hot sandwiches

**OVERALL FOOTPRINT :**  
 368 Square Feet  
 (23 ft x 16 ft)



# GRAB-N-GO COMPONENTS



**SINGLE DOOR COOLER**

**DIMENSIONS :**  
40"D x 42"W x 87"H

**CAPACITY :**  
(280) 20 oz Bottles



**DOUBLE DOOR COOLER**

**DIMENSIONS :**  
34"D x 66"W x 87"H

**CAPACITY :**  
(560) - 20oz Bottles



**HOT HOLD UNIT**

**DIMENSIONS :**  
37"D x 36"W x 86"H

**CAPACITY :**  
(75) Hot sandwiches



**OPEN AIR COOLER**

**DIMENSIONS :**  
40"D x 49"W x 87"H

**CAPACITY :**  
(24) - 8" Pre-Made Salads  
(44) - 8" Cold Sub Sandwiches



**DRY STORAGE**

**DIMENSIONS :**  
40" D x 42"W x 87"H

**CAPACITY :**  
(150) - Snacks/Chips

[GRAB-N-GO]



# POS & STRUCTURAL COMPONENTS



**DOUBLE POS**

**DIMENSIONS :**  
72"L x 34.5"W x 34"H



**SINGLE POS**

**DIMENSIONS :**  
28"L x 20"W x 34.5"H



**STANCHION**

**DIMENSIONS :**  
48"L x 18"W x 36"H





Carts. Kiosks. Portables

**GRAB-N-GO**

**RETAIL**

**SOLUTIONS**



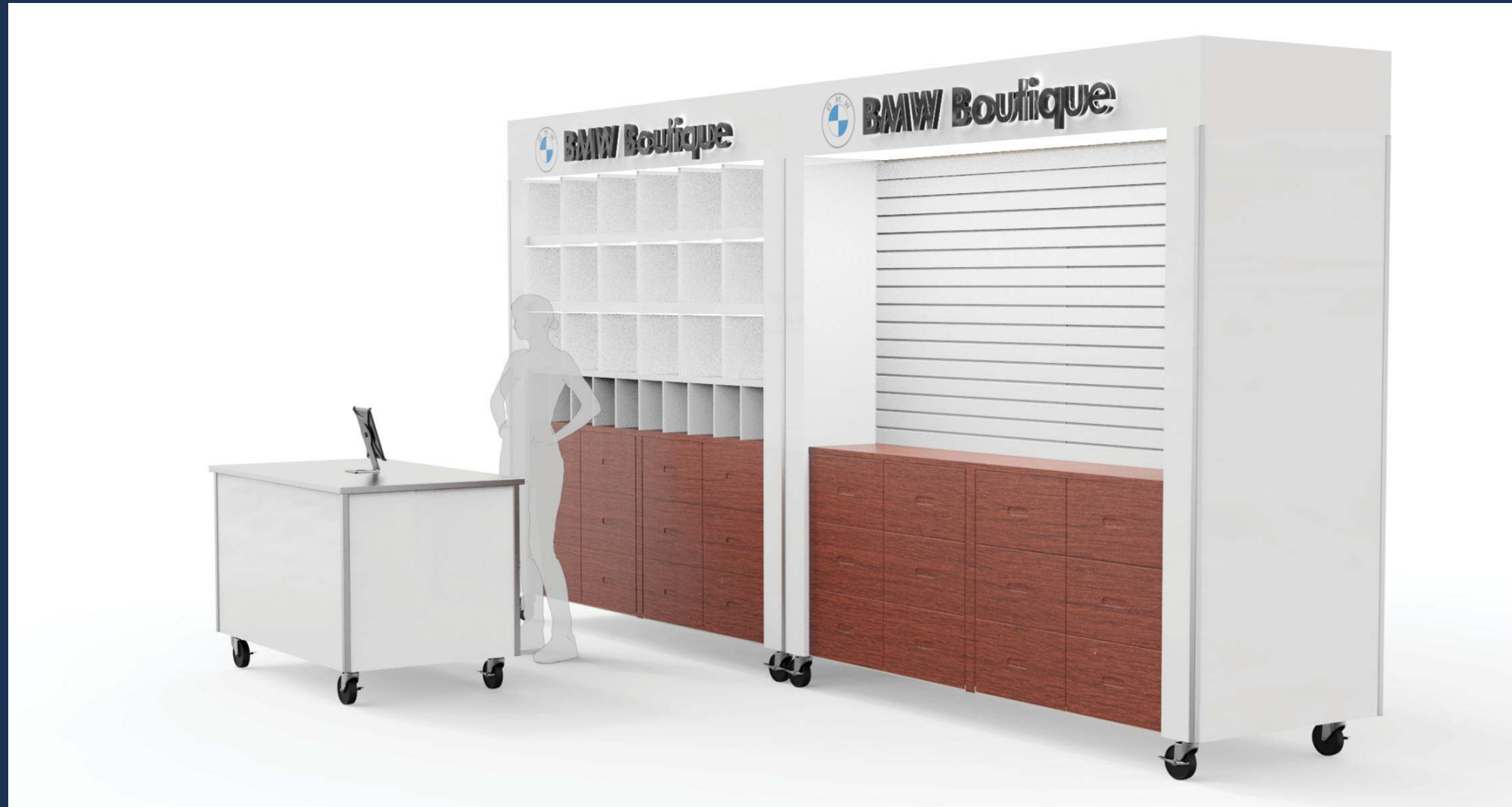
# RETAIL CONFIGURATIONS



## SINGLE-SIDED MODULE

The single-sided retail module offers a mobile solution to showcase merchandise in venues and stadiums.

- Mobility allows for responsive to changes in consumer traffic.
- Expanded points of sale provide a convenient shopping experience for consumers, relieve fixed merchandise concessions, and increase revenue.
- Display merchandise on upper panel and store inventory in drawers below. The 12 drawer module holds approximately 100 items, such as hats or shirts.
- Lockable doors and drawers for secure storage between events.



[RETAIL GRAB-N-GO]





# RETAIL CONFIGURATIONS



[RETAIL GRAB-N-GO]



## DOUBLE-SIDED MODULE

The double-sided retail module is the perfect solution for a quick, responsive adjustment to feature events that are on tight schedules.

- Readily update featured teams or events in one location with displays that can be conveniently rotated.
- Reduce time changing out merchandise.
- Display merchandise on upper panel and store inventory in drawers below. The 12 drawer module holds approximately 100 items, such as hats or shirts.
- Lockable doors and drawers for secure storage between events.





[ROI]



*Gallery*

## THE ROI DIFFERENCE

Why Gallery is the right partner for your investment.

- Client-focused service
- Innovative design
- Quality you can trust
- A win for your business





# FOCUSED ON YOUR BUSINESS GOALS

## GALLERY ADDS REVENUE TO UNDERUTILIZED SPACES



[GRAB-N-GO]





# CUSTOMIZED TO YOUR VISION

## GALLERY BRINGS YOUR BRAND TO LIFE



[GRAB-N-GO]





# OUR TEAM

WITH OVER 40 YEARS OF EXPERIENCE  
IN SUCCESSFUL DELIVERIES FOR CLIENTS,  
WE DRIVE VALUE TODAY  
AND INVEST IN TOMORROW.

## CONTACT US:

EMAIL : [sales@gallerycarts.com](mailto:sales@gallerycarts.com)

PHONE : 1(800) -227-8634 x2

CONTACT US





# MORE PRODUCTS

When quality matters, go with a Gallery.

[PRODUCTS]





## HAWKING

The Gallery Hawking Tray Program is a revolutionary iceless, environmentally-friendly method of distributing cold beverages to the patrons of stadiums, arenas, and venues that has proven to be efficient and effective.

### Elements of the Hawking Tray System:

- ◆ **Mobile Hawking Cart** - Supported from the vending room, the hawking cart can be used as a point of sale and a hawker support cart
- ◆ **Hawking Distribution Cart**- Strategically placed hawking distribution carts store loaded trays at temperature and enable the hawker a convenient method to quickly replace trays
- ◆ **Hawking Tray** – Iceless trays keep beverages cold and are lighter than conventional trays. They are the best way to secure cost savings, time savings, and mitigate risk



[HAWKING]





*Gallery*

## E-VEHICLES

Electric vehicles are quickly becoming a high demand item. Utilizing Gallery's E-Vehicles for food service operation provides mobile and sustainable ways for companies to expand their operating footprint and branding opportunities.

- ◆ Increased mobility creates additional points of sale for large campuses and venues
- ◆ Battery run time equips a fully operational vehicle for eight hours or more
- ◆ Expands the branding opportunity for increased public recognition
- ◆ Zero emissions allow for the flexibility of indoor and outdoor use



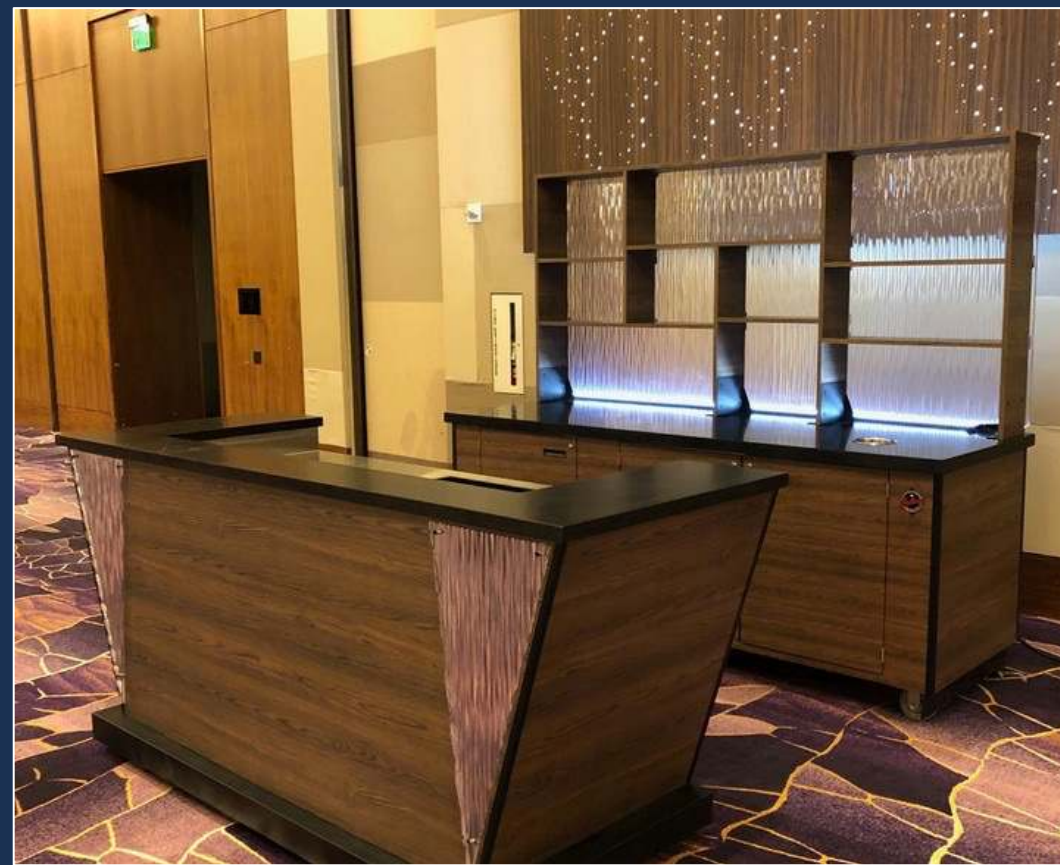


# Gallery

## BAR CARTS

Bar Carts elevate guest experience with an upscale, custom fit and finish designed to provide a non-concessionary feel.

- ◆ Tap systems for liquor or draft beer
- ◆ Consumable ice bins
- ◆ Refrigeration for condiments and packaged beverages
- ◆ LED lighting and liquor display shelving for attractive visuals
- ◆ Self-contained water source for hand sinks and wastewater tanks



[BAR CARTS]



[BATTERY POWERED CARTS]



*Gallery*

**BATTERY  
POWERED**

Battery-powered carts increase mobility with an iceless, pushcart solution for expanded points of sale and delivery of cold beverages and snacks to guests.

- ◆ Self-contained, rechargeable battery system to power refrigeration
- ◆ Display racks showcase consumer food and beverage options
- ◆ Push bar enables easy maneuvering through crowds
- ◆ Sized to fit into most elevators for extended mobility
- ◆ Sizable storage area for back up products





## ACTION STATIONS

Action stations create an elegant opportunity for guests to enjoy freshly cooked, sizzling hot food; and flavorful, refreshing cold food prepared by live chefs.

- ◆ Millwork or stainless steel / aluminum basic body construction
- ◆ UL/ETL certification meets standards of quality and safety with a singular electrical point
- ◆ Multiple laminate, countertop, graphic and theming options to match the style of the venue
- ◆ Can be customized with various food service equipment platforms tailored to serve unique cuisines



[ACTION STATIONS]